

New products in Maritim

2023

Check out our new products!

We are adding several new products every month into our product range.

Subscribe to our newsletter at www.maritim.fi and you will be among the first to hear about them.



ANTIFOULING INTERNATIONAL B-FREE EXPLORE

A biocide-free antifouling paint for use on underwater boat hull surfaces.

When in water, an exceptionally smooth and slick film forms on the surface of the paint, which efficiently prevents fouling while improving the vessel's performance and reducing fuel consumption.

9519101320 / 750 ml - white
9519101322 / 750 ml - red
9519101324 / 750 ml - navy
9519101326 / 750 ml - black
9519101327 / 2,5 l. - black



CONVERSION COAT KIT 750 ML INTERNATIONAL B-FREE

B-Free Conversion Coat is a two-pack primer that can be applied on top of pre-existing antifouling in good condition before applying B-Free Tiecoat primer as part of a conversion system for B-Free Explore antifouling. 750 ml.
9519101342



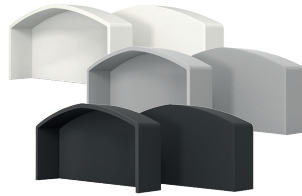
TIECOAT KIT 750 ML INTERNATIONAL B-FREE

Two-component primer to be used as the base for B-Free Explore antifouling coating. Ensures excellent adhesion of the B-Free Explore antifouling coating. 750 ml.
9519101340



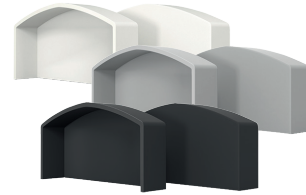
WASH DOWN CONCENTRATE 3,8 L AWLWASH 2.0

Formulated to clean Awlgrip, Awlgrip HS and Awlcraft 2000. Contains no alkalis, acids or abrasives. Will not scratch the painted surface. Removes mild stains such as water spots and diesel soot. free-rinsing formula for faster drying. 100 % biodegradable.
9519107181



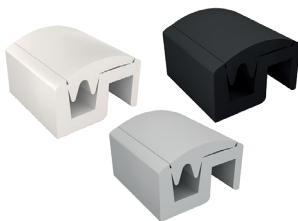
END CAP FOR 90 MM RIGID RUB RAIL TESSILMARE QBE

9516019242 / white
9516019243 / grey
9516019241 / black



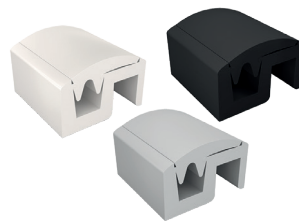
END CAP FOR 65 MM RIGID RUB TESSILMARE QBE

9516019245 / white
9516019246 / grey
9516019244 / black



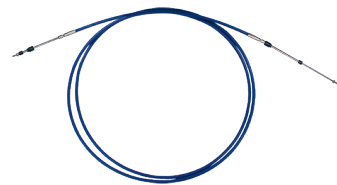
RIGID RUB RAIL 65 MM, 12 M TESSILMARE QBE

Excellent in heavy duty conditions thanks to the robust supporting structure and the steel bar. Works for both boxed and sandwich junctions boats. Ideal for recreational, commercial and military boats as well.
9516019238 / white
9516019240 / grey
9516019236 / black



RIGID RUB RAIL 90 MM, 24 M TESSILMARE QBE

Excellent in heavy duty conditions thanks to the robust supporting structure and the steel bar. Works for both boxed and sandwich junctions boats. Ideal for recreational, commercial and military boats as well.
9516019232 / white
9516019234 / grey
9516019230 / black



REMOTE CONTROL CABLE 56' ULTRAFLEX MACH ZERO CAVO

New low friction flexible and precise MACH series control cables for Japanese brand outboard and inboard engines; Yamaha, Suzuki, Honda, Tohatsu, Selva, Nissan, Force. Reserver travel 87 mm.
Shell Ø 8 mm. 1 pc.
9513773756 / Mach Zero Cavo 56'
9513773746 / Mach Zero 46'



ROPE, 10 MM ROBLINE NEPTUN 500

Soft and very easy to touch all-round rope suitable for small and medium cruising yachts. Core polyester soft. Cover polyester 16. UV-resistance. Sold in rolls. Length 200 m. daN 1800 kg. White.
9518114910



SWIVEL MOUNTING ARMS 36" FOR SOFT BOTTOM BOAT HURLEY MARINE H20

Easily mounted on the swim platform and can be installed while the vessel is in the water. Easily removable when not in use. Allows scuff-free maneuvering of your soft bottom dinghy. Max. load 113 kg.
9519037902 / white
9519037903 / black



SWIVEL MOUNTING ARMS 36" FOR HARD BOTTOM BOAT HURLEY MARINE H20

Easily mounted on the swim platform and can be installed while the vessel is in the water. Allows scuff-free maneuvering of your hard bottom dinghy. Easily removable when not in use. Max. load 113 kg.
9519037906 / white
9519037907 / black



SWIVEL MOUNTING ARMS 10" FOR SOFT BOTTOM BOAT HURLEY MARINE H20

Easily mounted on the swim platform and can be installed while the vessel is in the water. Easily removable when not in use. Allows scuff-free maneuvering of your soft bottom dinghy.
9519037900 / white
9519037901 / black



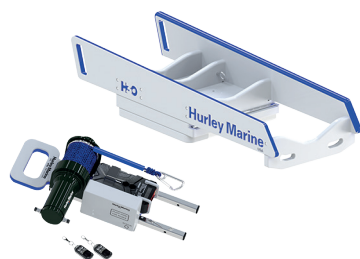
SWIVEL MOUNTING ARMS 10" FOR HARD BOTTOM BOAT HURLEY MARINE H20

Easily mounted on the swim platform and can be installed while the vessel is in the water. Easily removable when not in use. Allows scuff-free maneuvering of your hard bottom dinghy.
9519037904 / white
9519037905 / black



TRANSPORT RAMP WITH MANUAL WINCH, MAX. 181 KG HURLEY MARINE H30

The rugged Hurley H30 system is specifically designed to allow the safe retrieval and storage of a rib, dinghy or hard hulled tender. Ideal for high swim platforms, docks and/or heavy tenders.
9519037910 / white
9519037911 / black



**TRANSPORT RAMP WITH
ELECTRIC WINCH, MAX. 181 KG
HURLEY MARINE H30**

Specifically designed to allow the safe retrieval and storage of a rib, dinghy or hard hulled tender. Ideal for high swim platforms, docks and/or heavy tenders. An adjustable and removable manual winching system.

9519037912 / white
9519037913 / black



**TRANSPORT RAMP WITH
MANUAL WINCH, MAX. 328 KG
HURLEY MARINE H30+**

Fits for ribs, rigid tenders, jet ski's (Sea-Doo Spark) and other craft. Ideal for high swim platforms, docks and/or heavy tenders. Removable 183 cm winch arm. Adjustable inner bunk system for added support.

9519037914 / white
9519037915 / black



**TRANSPORT RAMP WITH
ELECTRIC WINCH, MAX. 328 KG
HURLEY MARINE H30+**

Fits for ribs, rigid tenders, jet ski's (Sea-Doo Spark) and other craft. Ideal for high swim platforms, docks and/or heavy tenders. Electric 12 V winch with remote control and wiring harness. Removable 183 cm winch arm.

9519037916 / white
9519037917 / black



**TRANSPORT RAMP WITH
MANUAL WINCH, MAX. 453 KG
HURLEY MARINE H30+ XL**

Fits for ribs, rigid tenders, jet ski's (Sea-Doo Spark) and other craft. Ideal for high swim platforms, docks and/or heavy tenders. Removable 183 cm winch arm. Adjustable inner bunk system for added support.

9519037920 / white
9519037921 / black



**TRANSPORT RAMP WITH
ELECTRIC WINCH, MAX. 453 KG
HURLEY MARINE H30+ XL**

Fits for ribs, rigid tenders, jet ski's (Sea-Doo Spark) and other craft. Ideal for high swim platforms, docks and/or heavy tenders. Removable 183 cm winch arm. Electric winch with remote control and wiring harness.

9519037922 / white
9519037923 / black



**CHOCKS FOR PRE-INSTALLED
RAILS HURLEY MARINE**

Chocks for installation on pre-installed bathing platform rail system. Easily removable when not in use. Price/pair.

9519037930 / white
9519037931 / black



**CHOCKS INCLUDING RAIL
SYSTEM HURLEY MARINE**

Chocks complete with bathing platform rail system. 2 x King Starboard 3' rails included. Easily removable when not in use.

9519037932 / white
9519037933 / black



**CHOCKS WITH PIVOTING
DECKPLATE HURLEY MARINE**

Pivoting chocks to fit directly onto bathing platform using double button deckplate system (included). Easily removable when not in use. Price/pair.

9519037936 / white
9519037937 / black



**CHOCKS INCL. DECKPLATE
SYSTEM HURLEY MARINE**

Chocks to fit directly onto bathing platform using round deck plate system (included). Easily removable when not in use.

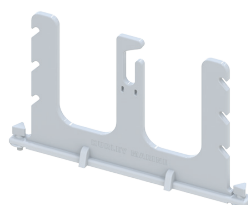
9519037934 / white
9519037935 / black



**CHOCKS WITH PIVOTING RAIL
SYSTEM HURLEY MARINE**

Pivoting chocks for installation on pre-installed bathing platform rail system with double button plate and under rail receiver block. Easily removable when not in use.

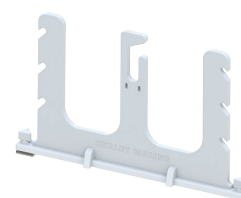
9519037939 / white
9519037938 / musta



**SUP BOARD + PADDLE RACK
HURLEY MARINE**

A rack for storing two SUP boards and two paddles. For installation directly on the swimming platform, deck or pier. Made of special plastic designed for marine use, which protects against sun, salt water, fading and corrosion. The rack is easy to remove if required. Sold in pairs. Includes fixing accessories.

9519037940



**SUP BOARD + PADDLE RACK
WITH RAILS HURLEY MARINE**

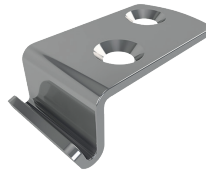
A rack for storing two SUP boards and two paddles. The rack is mounted on rails that allow it to slide. Made of special plastic designed for marine use, which protects against sun, salt water, fading and corrosion for a long time. The rack is easy to remove if required. Sold in pairs. Includes rails and fixing accessories.

9519037942



DECK FILLER FOR 1 1/2" HOSE PERKO

Diesel. Chrome plated bronze cap & black polymer body. For hose size: 1-1/2". O.D. flange 3 3/8". mounting hole diameter 2 1/8". O-ring included. 9511041098



CATCH PLATE 90° FOR COVERED LATCH ROCA

A catch plate 90°. For covered eccentric latch 934151 ja 934152 (415). Surface treatment electropolished. Material acid proof stainless steel (AISI316). 9516008025



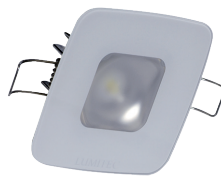
NON-LOCKING SLAM LATCH 61 MM, ROCA

Acid proof stainless steel (AISI316). Ø 61 mm slam latch comes with a thin backing plate, a spacer, and 2 sets of crews for panel thickness 2 - 22 mm. Easy to install. Push to close, pull to open. Surface treatment polished. 9516060164



FLUSH MOUNTED LED SPOT- LIGHT, RGBW LUMITEC MIRAGE

Perfectly suited for a variety of indoor or outdoor overhead lighting needs. Output options include architectural-grade high CRI warm white, white/blue/red multi-color, or full-color spectrum RGBW offering nearly infinite output color possibilities. 380 lm. 9514030432



LED SPOT LIGHT, RGBW LUMITEC MIRAGE

Perfectly suited for a variety of indoor or outdoor overhead lighting needs. Output options include architectural-grade high CRI warm white, white/blue/red multi-color, or full-color spectrum RGBW offering nearly infinite output color possibilities. 380 lm. 9514030488



LED SPOT LIGHT, RGBW LUMITEC MIRAGE

With white frame. Output options include architectural-grade high CRI warm white, white/blue/red multi-color, or full-color spectrum RGBW offering nearly infinite output color possibilities. 380 lm. Depth 2,54 cm, Ø 8,25 cm. 9514030466



LED SPOT LIGHT, RGBW LUMITEC HALO SPECTRUM

Ideal for a variety of cabin and outdoor uses. Intelligent circuitry enables advanced features like dimming and multi-color control without external control modules, specialized switches or additional wire runs. 5000K. 210 lm. Ø 5,05 cm. Flush mounted. 9514030384 / white
9514030372 / brushed



LED SPOT LIGHT, RGBW LUMITEC SHADOW

Flush mounted. TTP technology enables dimming and color change with a standard 2-wire hookup to any ON/OFF switch. Compatible with most 3rd party controllers dimmers. 5000K. 305 lm. 9514030452 / white
9514030442 / polished



LED SPOT LIGHT, RGBW LUMITEC ORBIT

Ideal for a variety of cabin lighting, T-top lighting and mezzanine uses. Intelligent circuitry enables advanced features like dimming and multi-color control without external control modules, specialized switches or additional wire runs. 210 lm. Ø 5 cm. 9514030348 / white
9514030334 / brushed



LED DECK LIGHT LUMITEC CAPRI2

Two-color technology provides amazing white output with elegant blue and night vision-preserving red for navigating hazardous waterways. Wide beam optical technology puts the light across the deck where you need it most. 10 - 30 V DC. 5000K. 1000 lm. D. 3,98 cm, w. 3,98 cm, h. 12,56 cm. 9514030522



DECK LIGHT, BRACKET MOUNT LUMITEC MAXILUME H60

Internal dimmer control. 10 - 30 V DC. 12 V DC Amp: 5A / 24 V DC Amp: 2,5A. Related watts 60 W. 5000K. 6 000 lm. Depth 6,6 cm, width 8 cm, height 18,11 cm. Finish/housing: black. 9514030558



FLUSH MOUNTED DECK LIGHT LUMITEC MAXILUME H60

Internal dimmer control. 10 - 30 V DC. 12 V DC Amp: 5A / 24 V DC Amp: 2,5A. Related watts 60 W. 5000K. 6000 lm. Depth 6,33 cm, width 6,92 cm, height 21,08 cm. White. 9514030560



LED DECK LIGHT LUMITEC CAPRERA2

Two-color technology provides amazing white output with elegant blue and night vision-preserving red. Exclusive wide beam optical technology. 10 - 30 V DC. Related watts 16 W. 5000K. 1000 lm. Depth 6,55 cm, width 11,40 cm, height 5,05 cm.
9514030526



ADAPTER KIT LUMITEC

Covers oversized holes from old style halogen lights while providing an ideal mounting solution for Orbit or Halo flush mount down lights. has no exposed fasteners for a clean look inside and out. Use in holes 1,875" to 2,750". 10-30 V DC. Depth 1,82 cm. Diameter 7,62 cm. 9514030300



FLOODLIGHT LUMITEC OCTANE

Style, refinement, meticulous design and amazing performance. 1000 lm. Black body. 10 - 30 V DC. 12 V DC Amp: 1,3A / 24 V DC Amp: 600mA. Related watts 16 W. 5000K. Height 7,62 cm, depth 6,98 cm, diameter 6,04 cm.
9514030554



UNDERWATER LED LIGHT LUMITEC SEABLAZEX2

Chrome plated. With spectrum output delivers exceptional performance with over 6000 lumens of output. An internally synchronized white/blue cross-fade mode. 10 - 30 V DC. 12 V DC Amp: 5A / 24 V DC Amp: 2,5A. Related watts 60 W. 6500K. Depth 2,15 cm. Diameter 8,86 cm.
9514030734



UNDERWATER LED LIGHT LUMITEC ZAMBEZI MINI

Surface mount. Aluminium. Perfect for smaller pontoons and skiffs. Easy to mount. Full-color RGBW spectrum model. 10 - 30 V DC. 12 V DC Amp: 880mA / 24 V DC Amp: 450mA. Related watts 10,5 W. 6500K. 670 lm. Depth 3,04 cm, diameter 7,6 cm.
9514030718



UNDERWATER LED LIGHT LUMITEC ZAMBEZIX2

Surface mount. Bronze. Compatible with Poco digital lighting control system. 10 - 30 V DC. 12 V DC Amp: 5A / 24 V DC Amp: 2,5A. Related watts 60 W. 6500K. 6000 lm. Depth 4,06 cm, diameter 10,16 cm.
9514030738



UNDERWATER LED LIGHT LUMITEC ZAMBEZI QUATTRO

Surface mount. Bronze. Perfect match for larger pontoon boats, aluminum skiffs, and floating docks. 10 - 30 V DC. 12 V DC Amp: 2,1A / 24 V DC Amp: 1,1A. Related watts 25 W. 6500K. 2000 lm. Depth 4,06 cm, diameter 10,16 cm.
9514030722



LIGHT STRIP 150 MM LUMITEC RAIL2 MINI

Effective for use in exterior as well as interior applications. Available in many color options: warm white, neutral white, blue, red or full-color spectrum. 12 V DC Amp: 510mA / 24 V DC Amp: 200mA. Related watts 4 W. 5000K. 330 lm. Depth 1,53 cm, width 2,82 cm.
9514030872



LIGHT STRIP 300 MM LUMITEC RAIL2

Choose the light in warm white with dimming for interior spaces, or neutral white 3-color for your exterior. 10 - 30 V DC. 12 V DC Amp: 880mA / 24 V DC Amp: 460mA. Related watts 11 W. 5000K. 900 lm. Depth 1,53 cm, width 2,82 cm.
9514030836



LIGHT STRIP, RGBW LUMITEC MORAY FLEX

Compatible with Poco digital lighting control system; can easily be controlled from an on-board MFD, smartphone, or tablet. 5000K.
9514030882 / 45,7 cm - 113 lm.
9514030874 / 91 cm - 225 lm.
9514030884 / 137 cm - 338 lm.
9514030876 / 183 cm - 450 lm.



LED DECK LIGHT LUMITEC GAI2

Perfect for a wide range of applications: chart light, reading light, task light or even a deck light. 10 - 30 V DC. 12 V DC Amp: 430mA / 24 V DC Amp: 250mA. Related watts 6 W. 5000K. 340 lm. Diameter 3,78 cm.
9514030920 / white
9514030910 / brushed



LED DECK LIGHT LUMITEC GAI2

Perfect for interior or exterior use. For cabin reading light, cockpit task light or even a work space light. 10 - 30 V DC. 12 V DC Amp: 430mA / 24 V DC Amp: 250mA. Related watts 6 W. 5000K. 340 lm. Diameter 3,78 cm.
9514030924 / brushed aluminium
9514030926 / white



EXPANSION MODULE RGBW/RGB LUMITEC PICO C4

The Pico C4 module provides Poco or TTP control of third-party RGB or RGBW lighting accessories. Pico C4 provides control of color and intensity through any normal on/off switch, using Lumitec's field-proven TTP protocol.
9514030952



EXPANSION MODULE LUMITEC PICO S8

The Pico S8 module provides the ability to assign Poco virtual switch commands to physical mechanical switches (up to 8 max.): your MFD can remain on a dedicated screen, or even be turned off, and a physical switch will activate the virtual switch command through the Poco module.
9514030954



DIGITAL LIGHTING CONTROL MODULE LUMITEC POCO 3

Poco 3 digital lighting control delivers powerful, low-cost, on-board lighting control through a compatible MFD or connected smart device and a simple, easy to install control module.
9514030956



MANUAL AUTOMATIC FIRE SUPPRESSION SYSTEM SEA-FIRE

Manual automatic fire suppression system.
9517006272



NOVEC EXTINGUISHER, MAX. 6,4 M³ SEA-FIRE

Automatic/manual. Environmentally responsible. not damaging to equipment and machinery. no clean-up after discharge. fast, extinction takes place in seconds (10 sec. or less). This product requires a SMAC manual release cable.
9517006223



HALOGEN SEARCH LIGHT GOLIGHT STRYKER ST

The Golight 3051ST Stryker ST is a super durable, powerful, and versatile wireless halogen searchlight. For permanently installation. Luminous intensity 225 000 candelas. 370 degrees rotation and 135 degrees tilt. Beam angle 8 degrees 8°. Max. beam distance 3113 ft.
9514039252



LOWER ROLLER BÅTSYSTEM P1070

Suitable for anchor roller P1301 and 1400, 1405, 1410, 1420 and 1420-1 anchor holder. Not supplied with axle. Length 1670 mm, width 60 mm. Width for rope 16 mm. Diameter 77 mm. Hole diameter 16 mm.
9519037563



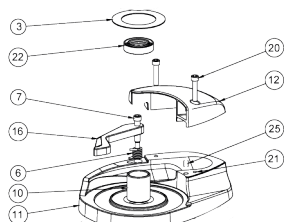
CENTRAL AXIS BÅTSYSTEM

For Båtsystem lower roller P1070.
9519037565



SEAL KIT FOR HATCH LEWMAR

Seal kit spare. To fit Coastline and Trimline hatches. Size 40.
9512407455



BASE KIT LEWMAR

Base kit for CPX 1/2/3 windlass, Gen2.
9512408231



BALL CUP FOR 6 - 7 MM WIRE BLUE WAVE

Polished stainless steel AISI316.
9512100057



EYE TERMINAL FOR 7 MM WIRE BLUE WAVE

Eye terminal for 7 mm wire. Polished stainless steel AISI316. Eye diameter 13 mm. Breaking load 6800 kg.
9512100017



DIRECTORS CHAIR ARC MARINE

Unoleed. The foldable boat chair is stable, strong, comfortable, and is easy to store. Can be used inside as outside.
9519037190



BLACK CUSHION SET ARC MARINE

The deluxe cushions from ARC Marine provide you with extra comfort on board. This set is made up of a back seat, seat, and bottom seat.
9519037192



BLACK CANVAS SET ARC MARINE

Black canvas seating for teak director's chair. The advantage of canvas fabric is that it dries fast after a wave or rainfall.
9519037188



DIRECTORS CHAIR ARC MARINE

Oiled teak. The foldable boat chair is stable, strong, comfortable, and is easy to store. Oiled version has to be reoiled every once in a while to keep the shine.
9519037186



FOLDING TABLE 60 X 60 CM ARC MARINE

For on board or ashore. Can be adjusted in height, with the insert. Ideal as a dining table but can also be used as a coffeetable in the cockpit. The table is foldable and it takes up little space to store. Manufactured from teak and resistant to all weather conditions.
9519037215



EXTENSION PIECE ARC MARINE

Extension piece for the folding table (9519037215) to increase the height and size of the table top. Oiled.
9519037216



SIGNALFLAG PILLOW 50 X 60 CM ARC

100 % cotton.
9515008690 / J
9515008692 / M
9515008694 / W
9515008696 / X



WASTE BIN 5 L ARC FLETRASH

For camping, car or boat. Made from recycled PET bottles. With a handy zipper on the side of the bin bag to easily empty that full inner bag without hassle.
9515008756 / black
9515008760 / green
9515008758 / grey



WASTE BIN 9 L ARC FLETRASH

For camping, car or boat. Made from recycled PET bottles. With a handy zipper on the side of the bin bag to easily empty that full inner bag without hassle.
9515008750 / black
9515008752 / grey
9515008754 / navy



FLIP CLIP FLETRASH

To install Flextrash behind your drivers seat, on the metal headrest rods. Because of the clicksystem with which you can click your Flextrash back to your seat, this clip is kidfriendly.
9515008776



VACUCLIP ARC FLETRASH

The suction cup of flexible vacuclip allows you to use your Flextrash bin almost everywhere. Attach it onto a flat surface like glass or tiles and keep your camper, boat, car or office clean.
9515008772



TABLECLIP ARC FLETRASH

Fix your Flextrash on any table or desk between 10 and 40 mm thick. Perfect for boat, outdoor kitchen, camping trip, office... Also perfect for all models of Tesla cars.
9515008770



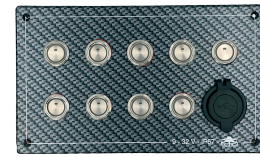
WALLMOUNT ARC FLEXTASH

To mount your Flextrash waste bin on a wall with the included 3M tape or screws. You can use your trashbin anywhere you want by simply sticking the wallmount clip onto any flat surface.
9515008774



USB CHARGE SCANSTRUT FLIP PRO FAST

Ultra-fast.
Designed for use with either a 12 V or 24 V input and features 1x USB-A and 1x USB-C charging port.
9514601127



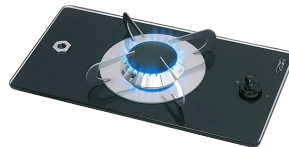
ELECTRICAL PANEL + 2 USB TREM

White light switches. Supplied fully pre-wired with a 1 m cable. At the termination, fuse box to facilitate the wiring of the desired use and the possible intervention on a fault. 9 - 32 V.
9514014042



EMBED GAS STOVE STAINLESS STEEL, CAN S.R.L

Gas hob 1 burner unit complete with thermocouple. Gas propeller. Power SR 1,9 kW, supply Gpl 28 - 30 mbar, safety system thermocouple, stainless steel 304 L, energy consumption SR 127 G/h, power ON: manual.
9515008546



EMBED GAS STOVE GLASS, CAN S.R.L

Rectangular glass top 1 burner complete with thermocouple. Power SR 1,9 kW, supply Gpl 28-30 mbar, safety system thermocouple, material tempered glass 8 mm, energy consumption SR 127 G/h, power ON: manual.
9515008544



INDUCTION 220 V CAN S.R.L

Mini induction hob with heat-resistant glass-ceramic cooktop panel and touch-sensing control panel. Built-In dimensions width 185 x depth 235 mm. 5-level power control (200 - 1100 W). Overheat and empty-pan auto shut-off.
9515008548



LED DECK LIGHT RGB LUMITEC CAPRI3

Flood light with 1200 lumens and with improved optical beam pattern. Spectrum RGB technology provides an almost infinite number of lighting color options. PLI-enabled (Poco). 12 W.
9514030616 / white
9514030626 / black



LED DECK LIGHT RGB CAPRERA3

With bracket mount. Flood light with 1200 lumens and with improved optical beam pattern. Spectrum RGB technology provides an almost infinite number of lighting color options. PLI-enabled (Poco). 12 W.
9514030596 / white
9514030606 / black



FLUSH MOUNT LED FLOOD LIGHT LUMITEC CAPRI LT

Reliable and high-performance spotlight – also for extreme conditions. Compatible with most PWM LED dimmers. 1000 lumens. 10 - 30 V DC.
9514030534



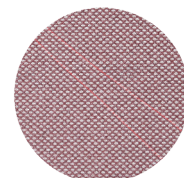
LED LIGHT BAR LUMITEC RAZOR

Flush-mounted. Razor's long-throw is invaluable for spotting markers and obstructions. It also floods cockpits, gunwales and surrounding areas with more than 10000 night-piercing lumens. 108 W, 10 - 30 V DC.
9514030580



LED NAVILIGHT PERKO BI-COLOUR

High tech, self contained LED modules, new stylish rounded design. 12 V, 0,21A, 2,5 W.
9514033900



SANDING DISC MIRKA ABRANET ACE HD

Suitable for hard wood, paint stripping/ removal lacquerst. The strong net structure resists high wear and tear and the makes Abranet Ace HD ideal for heavy-duty applications.
9519401622 / P60
9519401624 / P80
9519401626 / P120



TANK LEVEL INDICATOR GOBIUS C

Plug and play installation. Sensor, cable, 3M cleaning wipe and an extra 3M sensor tape are included. Handles voltage of 12 - 24 V. Can be connected to control systems and analog instruments.
9514052024



ADAPTER FOR METAL TANKS GOBIUS C

Special adapter for mounting the sensor on a metal tank. All inclusive; adapter, 3M tape, and two O-rings for sealing.
9514052026



OUTLET PIPE WITH NON RETURN VALVE SANIMARIN

Outlet pipe with non return valve for Sanimarin's water toilets.
9515022457



ANCHOR 30 KG LEWMAR CLAW SS

Constructed of high-grade stainless steel. The claw anchor sets effortlessly and holds in a variety of sea beds. It also stows easily on the bow roller of most boats. Recommended chain size 10 mm.
9512401421



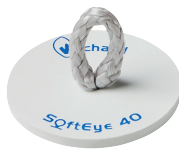
INDICATORS WEMA NMEA2000

Stainless steel bezel and arched glass. Easy to connect into a NMEA2000 network. Delivered with 1 m NMEA2000 drop cable/ back bone cable with female and male connector. 12 V.
9514700910 / blackwater
9514700906 / water tank level



TWIN LEVER CONTROL ULTRAFLEX B302B

Single lever for 2 engines/dual action control to operate both throttle and shift. Suitable for any type of boat with inboard engine. Neutral safety switch prevents in-gear starting.
9513024090



STICK-ON PADEYE WICHARD SORTEYE 40

Allows you to fasten your equipment without drilling. It can be used outside or inside the boat.
9511005050B



ROBE ROBLINE NEWPORT 8

A mooring line that offers great ease of splicing paired with optimum abrasion values and that, when stowed.
9518155115 / 14 mm - BL 3750 daN
9518155117 / 16 mm - BL 4700 daN

MAESTRINI FITTINGS

Elbow with spin 90°, brass

9515010114B 1/4"
9515010116B 3/8"
9515010118B 1/2"
9515010120B 3/4"
9515010122B 1"
9515010124B 1 1/4"
9515010126B 1 1/2"
9515010128B 2"

Elbow 90°, brass

9515010100B 3/8"
9515010102B 1/2"
9515010104B 3/4"
9515010106B 1"
9515010108B 1 1/4"
9515010110B 1 1/2"
9515010112B 2"

Elbow 45°, brass

9515010130B 3/8"
9515010132B 1/2"
9515010134B 3/4"
9515010136B 1"
9515010138B 1 1/4"
9515010140B 1 1/2"
9515010142B 2"

T-piece, brass

9515010144B 3/8"
9515010146B 1/2"
9515010148B 3/4"
9515010150B 1"
9515010152B 1 1/4"
9515010154B 1 1/2"
9515010156B 3/8"

Reducer fitting, brass

9515010158B 1/2"x1/4"
9515010160B 1/2"x3/8"
9515010162B 3/4"x3/8"
9515010164B 3/4"x1/2"
9515010166B 1"x1/4"
9515010168B 1"x3/8"
9515010170B 1"x1/2"
9515010172B 1"x3/4"
9515010174B 1 1/4"x1/2"
9515010176B 1 1/4"x3/4"
9515010178B 1 1/4"x1"
9515010180B 1 1/2"x3/4"
9515010182B 1 1/2"x1"
9515010184B 1 1/2"x1 1/4"

Hose connector

9515010186B 1/4"x8mm
9515010188B 1/4"x10mm
9515010190B 3/8"x10mm
9515010192B 3/8"x12mm
9515010194B 3/8"x13mm
9515010196B 3/8"x16mm
9515010198B 1/2"x10mm
9515010200B 1/2"x12mm
9515010202B 1/2"x13mm
9515010204B 1/2"x15mm
9515010206B 1/2"x16mm
9515010208B 1/2"x18mm
9515010210B 1/2"x20mm
9515010212B 3/4"x16mm

Hose screw, brass

9515010214B 1/2"x18mm
9515010216B 1/2"x19mm
9515010218B 1/2"x20mm
9515010220B 3/4"x16mm

9515010222B 3/4"x19mm
9515010224B 3/4"x20mm
9515010226B 3/4"x25mm
9515010228B 1"x13mm
9515010276B 1/2"x8mm
9515010278B 1/2"x10mm
9515010280B 1/2"x12mm
9515010282B 1/2"x13mm
9515010284B 1/2"x14mm
9515010286B 1/2"x15mm
9515010288B 1/2"x16mm
9515010290B 1/2"x18mm
9515010292B 1/2"x20mm
9515010230B 1"x19mm
9515010232B 1"x20mm
9515010234B 1"x25mm
9515010236B 1"x27mm
9515010238B 1"x30mm
9515010240B 1"x32mm
9515010242B 1"x33mm
9515010244B 1"x35mm
9515010246B 1 1/4"x25mm
9515010248B 1 1/4"x30mm
9515010250B 1 1/4"x32mm
9515010252B 1 1/4"x33mm
9515010254B 1 1/4"x35mm
9515010256B 1 1/4"x38mm
9515010258B 1 1/4"x40mm
9515010260B 1 1/2"x25mm
9515010262B 1 1/2"x32mm
9515010264B 1 1/2"x38mm
9515010266B 1 1/2"x39mm
9515010268B 1 1/2"x40mm
9515010270B 1 1/2"x45mm
9515010272B 1 1/2"x50mm
9515010274B 1 1/2"x51mm

Fitting, brass

9515010294B 3/8"
9515010298B 3/4"
9515010296B 1/2"
9515010300B 1"
9515010302B 1 1/4"
9515010304B 1 1/2"
9515010306B 2"

Fitting with strainer, brass

9515010308B 3/8"
9515010310B 1/2"
9515010312B 3/4"
9515010314B 1"
9515010316B 1 1/4"
9515010318B 1 1/2"
9515010320B 2"

Ball valve, brass

9515010322 3/8"
9515010324 1/2"
9515010326 3/4"
9515010328 1"
9515010330 1 1/4"
9515010332 1 1/2"
9515010334 2"

Ball valve with water outlet, bronze

9515010336 1/2"
9515010338 3/4"
9515010340 1"
9515010342 1 1/4"
9515010344 1 1/2"
9515010346 2"



FERRULE PRESS LOCK COPPER

The copper clips can be clamped on stainless steel ropes using pliers.
9510928259 / 5 mm
9510928260 / 6 mm



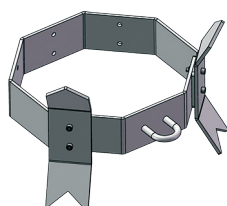
CERAMIC GAS STOVE DYNACOOK X2

Dynacook X2 mini is a safe, fast and modern ceramic gas stove. The gas flame heats the ceramic plate, thanks to which the heat is evenly distributed.
9515008520



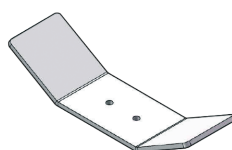
ANCHOR CHAIN SWIVEL

Anchor chain swivel for chain 10-13 mm. AISI316.
9510928248



ASSEMBLY BUOY WEIGHT 30 KG NAWA

It's possible to attach additional weights as needed up to a total weight of 40 kg. The advantage is the ease of transport and placement. The protrusions of the buoy weight effectively penetrate the bottom, enhancing the holding effect.
9513051130



ADDITIONAL WEIGHT OF BUOY WEIGHT 5 KG

Hot-dip galvanized 5 kg additional weight of the buoy weight. Attaches to a stackable buoy weight to add mass and grip.
9513051105



ROBE 8 MM ROBLINE ADMIRAL 7000

Consists of a Dyneema SK75 core with a tight 32-plait cover for optimized stability and stretch values, which makes it an extremely stable, low stretch allround high tech rope which can be used both as haly. Ø 8 mm, 200 m, 3900 daN, 42 g/m.
9518102109



HINGE 45 X 45 MM ROCA

Butt hinge in electro-polished stainless steel. AISI316.
9516003072



COMPRESSION LATCH Ø 61,5 MM ROCA

Flush-mounted. Ideal for use on all deck hatches from a small anchor box to a big machine room hatch. Supplied with a complete kit with spacers. Panel thickness 2,0 - 22,5 mm. Grip range 40,5 - 65,5 mm.
9516060134



GLASS SINK 360 MM OSCULATI

A glass bowl sink for installation on top of the counter. The trap is not included under the delivery. Ø 360 mm.
9515013132



DECK POD FOR DISPLAYS UP TO 9" SCANSTRUT

Install your MFD on virtually on any flat surface on board. This allows you to have your display in the prime position while out sailing on your powerboat and RIB. 360-degree viewing angle.
9514620462



ARM POD, UNCUT SCANSTRUT

Allows you to install your small screens, switches, controllers, chain counters and more onto any standard or curved rail. Fits rails from 25 mm to 33,7 mm.
9514620495



AA SENSOR MALE FIELD CONNECTOR LEWMAR

For easy installation the cables have male connectors at both ends (M-M).
9512400558



TWISTED WOOL PAD 180 MM MIRKA

The twisted wool pad is a pure wool pad for coarser polishing in marine, wood and ART applications. It is mainly used with Polarshine polishing compounds 35 and 20. 9519401073



ADAPTER MIRKA

Adapter to fit the double sided twisted wool pad (9519401073) onto the polisher. 9519401075



BATTERY-POWERED SANDER MIRKA ANGOS ARG-B 200 55 MM

Applications: removal of welding marks, paint removal, material grinding, burr removal. Included are two 5,0A 10,8V Li-ion batteries, a charger, and a quick adapter. 6 mm collet. The maximum allowed disc size is Ø 55 mm. 9519401079



LIFERAFT CRADLE TREM

Liferaft cradle vertical mounting, complete with plastic clamps. 9532006334



FIXING KIT FOR LIFERAFTS TREM

Fixing kit for liferafts AISI316, supplied with screws. 9532006335



LIFEJACKET LIGHT ALX SOLAS

Activates automatically in water. Can be manually turned ON/OFF. Bright LED flashes 50 - 70 times per minute for a minimum on 8 hours. Compatible with all life vests and survival suits. 9517001014



SUP BOARD STAND NAWA

Sturdy stand for inflatable SUP boards (max. height 150 mm and width 850 mm). Nawa connectors for versatile installation. Easy to install. Enjoy pumping without constant pumping and packing. 9519037950



CONNECTING PIECE SET PROFURL R350

Connecting piece set for Profurl's R350 Racing furler. 9512205275

MOUNTING FOOT MARCO EW3

Signal horn mounting leg. 9514008113

SOLENOID VALVE MAXLITE + S 12 V

9515022359





MAALINSEKOITUSTIKKU 20 CM MIRKA

S-shaped polypropylene paint stirrer. The s-shape make the mixing stick sturdier. Corrosion-resistant to both paint and thinner.
9519400088



SANDER MIRKA DEROS 650CV

Electric powered. For efficient and dustfree sanding of all types of surfaces. Light and ergonomic. Integrated vibration sensor and Bluetooth. 350 W, 4000 - 10000 rpm, 220 - 240 VAC, pad 150 mm (9519401376), 71 dB.
9510928298



POLISHER MIRKA PS 1437

Excellent tool for polishing smaller surfaces. Powerful, high torque electric motor. The rotational speed can be pre-selected and precision adjusted with a stepless switch. A spindle lock. Max. 150 mm pad (not including). 1400 W, 1100 - 3700 rpm.
9510928297



WASHING CONCENTRATE MIRKA POLARSHINE MARINE DEEP CLEAN 1 L

For cleaning boat's waterline and hull. Removes from the boat's surface stains caused by the likes of aquatic and bottom vegetation, discoloration, rust stains and fish blood. Suitable for gelcoat, fiberglass, paint, plastic, lacquer and other acid resistant surfaces. 9519401087



MIRKA MIRLON SOFT R/G

For sanding and cleaning. Double-sided usage – coarse and fine. The absorbent foam in the middle makes the Mirlon Soft ideal for cleaning with cleaning agents.
6 pcs/pkg.
9519401632



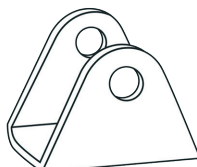
MIRKA MIRLON SOFT WHITE

For cleaning, oiling and polishing of sensitive oiled or waxed surfaces. Double-sided usage. Absorbent foam to retain liquids (as oil or detergents) on one side, and non-woven material without abrasive grains on the other side. 6 pcs/pkg.
9519401630



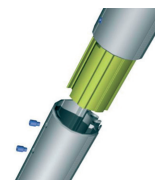
TRANSOM PLATFORM 27 X 36 CM TREM

Transom platform manufactured in stainless steel Ø 25 mm. Marine wood platform. U-joints for fastening to the transom. Provided with supports.
9519037072



FITTING FOR PS55 PLATFORM BÅTSYSTEM

Supplied as standard to bathing platform art.no PS55 (9519037428). For tube Ø 25 mm, hull fitting 2x M6 and tube fitting M8. Made of acid-proof AISI316 stainless steel.
9519037429



COMPLETE LOWER EXTRUSION FOR PROFURL C420

Lowest profile for Profurl C420 furling system. Includes attachment piece screws and Delrin bearing.
9512205279



DECK FILLER WITH PRESSURE RELIEF PERKO

EPA ratcheting cap gas fills with vacuum pressure relief (VPR), angled neck. Stainless steel cap with round bright aluminum insert and polymer body. Vent hose size: 5/8".
9511041097



DECK FILLER WITH PRESSURE RELIEF PERKO

Sealed ratcheting cap fill for 1-1/2" hose with pressure relief, straight neck. Black polymer body and cap. EPA complaint sealed cap with vacuum pressure relief valve.
9511041096



FUEL SYSTEM LOCKING CAP PERKO

For 1-1/2" non-vented fills. Suitable for Perko's deck fillers 0520, 0527, 0528, 0557, 0599 and 1270. Black polymer with gasket. Built in lock cylinder with cover for key hole.
9511041099



LED FLOOD LIGHT RGB LUMITEC CAPRI3

White, non dimming. Full-color Spectrum RGBW output. 1200 lumen.
No exposed fasteners. IP67 compliant and PLI enabled. Flush mount.
9514030632



LED FLOOD LIGHT RGB LUMITEC CAPRERA3

White, non dimming. 1200 lumen. Spectrum RGBW output. IP67 compliant and PLI enabled. Black housing. 10-30 V DC. Bracket mount.
9514030612



LED FLOOD LIGHT GOLIGHT STRYKER ST

Fixed 12 V floodlight. Includes a separate hand-held remote control.
10 high flux LED's, 8° beam angle
544,000 candela, max. beam distance 1474,9 m.
9514039258



LED LIGHT SET BÅTSYSTEM

Includes the following LED-strips: 1 pc 3 m, 1 pc 2 m, 1 pc 1 m, 2 pcs 1,60 m.
9510926369 / Yamarin 88DC.

Light set includes 2 pcs LED-strips (strip length 1 m).
9510926521 / AMT.



ADJUSTABLE LED ALL-ROUND

Adjustable. 60 -120 cm.
9510926427



RADAR POLE MOUNT 1,9 M SCANSTRUT

Installs your radar onto the deck or transom of your boat. 360° adjustable base. Choice of height. Easily removed. Stable installation.
Supplied as a complete kit.
9514620350



FUSE BLOCK BLUE SEA

12 circuits. Consolidates branch circuits and in-line fuses.
Maximum voltage 32 V DC.
9514801632



DUAL BATTERY ISOLATOR SKYLLERMARKS

12 V, 200A, with a cable 2 x 25 mm².
9514040027



SPARE COVER FOR W12 WIPER MOTOR ROCA

Spare covers for water sprayproof windshield wiper motor W12. Standard logo.
9514041398 / white
9514041399 / black



WHISTLE WITH COMPRESSOR MARCO

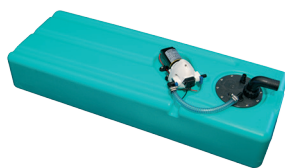
Approved signalling whistle complete with white horn Ø 200 mm, electric compressor and mounting accessories.
9514008096





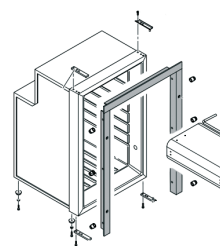
WATER TANK 71 L WITH PUMP CAN-SB

Water tank with pump, suitable for shower/sinks. With filling nipple and breather. 1,6A, 3,8 l./min., 2,8 bar, male fittings Ø 10 mm.
9515020108



WATER TANK 71 LT WITH PUMP CAN-SB

Water tank with pump, suitable for shower/sinks. With filling nipple and breather. Absorption 6A, flow of: 12 ltr/min, male fittings Ø 12 mm.
9515020111



INSTALLATION FRAME ISOTHERM INOX CR65CT DR65

Installation frame for Isotherm Inox 65L (9514047002 and 9514047004) refrigerator. Three sides.
9514048748



REARMING KIT CREWSAVER CREWFIT 180N

The Pro Sensor Elite automatic inflator replaces the Pro Sensor automatic inflator which is currently found on automatic Crewsaver lifejackets - including; ErgoFit+, ErgoFit, Crewfit 180N Pro/HD/HF, Crewfit 150N Junior, Seacrewader 290N 3D, Crewfit XD. 9557201103



LINE PROTECTOR WITH VELCRO FIXING ROBLINE

Line protector with Velcro-fixing. Can be easily fixed to any rope, also ready made loops. Protects rope against wear and tear thus prolonging useful life time of the rope. Suitable for ropes with 12 - 16 mm diameter.
9518015040



ROLLER BLIND 460 X 320 MM DOMETIC PORTSHADE

Rolls up neatly into the aluminum cassette. Blocks the light 100%. Installation either above or below the window. Available for all portlights on the market. Water resistant, UV resistant and solar reflective.
Simple installation.
9512500017



MARITIM
For the boating people



CIRCUIT BREAKER 50A MP

Offers a robust thermoplastic material case enclosure, designed with superior moisture sealing, in standard surface and panel mount configurations. Designed as a drop-in replacement for existing surface and panel mountable configurations. SAE & ABYC compliant. 9514810056



CIRCUIT BREAKER 50A MP

Manual reset with ON-OFF switch function. Surface mount. Standard Amp Rating 50A. Maximum voltage ratings type III 48 V DC. Termination 3/8"-16 threaded studs. Ignition protected. SAE- & ABYC compliant. IP66. 9514810158



COMPASS RITCHIE SPORT X-23BB

For a motorboat, dashboard installation. Scale size 51 mm (2"). Night light 12 V green. Does not include compensator. Black, front-readable black DR rose. View adjusts up to 30 degrees. 9514021011 / X-23BB - black
9514021009 / X-23BU - blue
9514021013 / X-23WW - white



SWITCH BUTTON BLUE SEA SYSTEMS

Mounts on any Blue Sea Systems Contura switch. Constructed of thermal plastic polycarbonate with a hard nylon surface overlay. For each embedded LED there is a corresponding number of lenses. 9514802516



REMOVAL TOOL BLUE SEA SYSTEMS

For Blue Sea Systems' switch button (9514802516). 9514802519



TWIST HANDLE KIT LEWMAR

Twist handle kit for Lewmar's Standard portlight. Color black. Pair. 9512407526

MARITIM



ROPE 6 MM ROBLINE NEPTUN 500

It's classic design and pleasant-to-touch and highly UV resistant cover are the main characterizing features of this allround rope for cruising yachts. 9518114406

DYNACOOK

FENDER COVER NORDSTAR

Black.
9510928361 / F2
9510928362 / F1

POT HOLDERS DYNACOOK

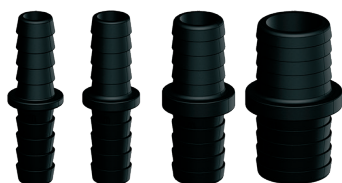
9515008521



HELLA MARINE EUROLED 150

Dual colour EuroLED touch lamp with dimming and remote momentary switch control. Low power consumption. Outstanding durability and long service life. 5000K (white). Multivolt 9 - 33 V DC. 9514035190





CONNECTORS TRUEDESIGN

High strength, high-modulus glass fibres impregnated into the nylon provides dramatic strength, stiffness, toughness, and dimensional stability.

9515030489 / 13 mm - 13 mm
9515030491 / 19 mm - 19 mm
9515030495 / 28 mm - 28 mm
9515030497 / 50 mm - 50 mm



TANK VENTILATOR PERKO

Polymer body and splash guard. For vent hose 5/8" vent line connection. Internal P-Trap design helps to protect canister and fuel system from water.

9513780268B



FLAT FENDER LINE ROBLINE

Better grip compared to traditional lines. Excellent holding power also on wire rails. Other end has a spliced 40 mm loop.

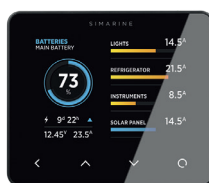
2 pcs/package. Grey.
9517159379



TRACK 32 MM / 2 M BARTON

For use with all Barton sliders. Drilled for fastenings and plunger stops. 'Spectro' grey anodised.

9512060556



SMART BATTERY PROTECTION SIMARINE PICO

For precise battery health measurements. Display LCD TFT 3,5" high resolution IPS. Maximum connections: 6 battery banks, 6 extra accumulator voltages, 20 current-using equipment or generators, 14 tank modules, 8 temperatures.

9514201003





DECK FILLER ROCA

For deck fillers on the boat, yacht, and other marine applications. Use for the deck filler body: 421438-421439 and 421451-421452. 9511041103



PARALLELING DEVICE BLUE SEA SYSTEMS

Use as a paralleling device for the ML Series switches. Tin-plated copper for maximum conductivity and corrosion resistance. 500A continuous rating. 9514801182B



COLD BOX SPARE CABLE LTC

Cold box spare cable. 9514602135



RADIO DS18 MRX-2

Bluetooth, 3" LCD display, CT sync, USB, 4 V output, 3 outputs, IP65, 2 RCA, RDS 4 x 50 W, AM/FM, RGB LED. 9514630002



CONNECTOR FOR RAIL 22 MM NAWA

Connector for installation of Nawa holders and brackets. Rail diameter 22 mm. 9517012003



4-STEP RETRACTABLE LADDER OSCULATI

Telescopic ladder with 4 steps + box to be slipped into the gangplank thickness. High-precision slip-in/out sliding movement. Extra-large steps (57 mm). 9519037020



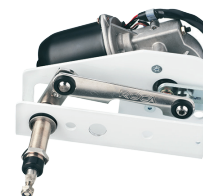
Y-CONNECTOR LEWMAR

Connecting leads and Y connector for use with 110TT and 140TT 2,0 kW thrusters using the simple joystick ref 589094 (9512408213). 9512408143



CABEL FOR COOLER BOX LTC

LTC Smart Living Cool (25, 30, 50, 75). 12 V cabel. 9514602134



WINDSCREEN WIPER MOTOR ROCA

Made for bigger windshields where you need a longer wiper arm. Suitable for the toughest conditions and can easily be adjusted from 45° - 110°. Powers up to 900 mm arms and blades. Two speeds. Insulated ground for metal, GRP, and wooden boats. 9514041382



STALON SIDE DECK DRAIN 90° 38 MM

Stalon side deck drain with stainless steel face and nylon-fiberglass filled body. 9515030074



ELECTRIC WINCH REMOTE HURLEY MARINE

H30 and H30+ electric winch replacement remotes includes two remotes with batteries. 9519037929



COVERED ECCENTRIC LATCH ROCA

This slim and elegant black covered eccentric latch is ideal for use in the industrial and maritime sector, aided by efficient catch plates. Includes a straight catch plate. 9516008033



ALL-AROUND LINE 4 MM ROBLINE DINGHY CONTROL

Dinghy Control is an all-around high tech control line that comes in various colors and diameters. This line excels due to the colored Dyneema SK78 core which allows you to stay on top of things even in case of complex handling systems. Red.
9518118304



MOORING LINE ROBLINE PALMA ELASTIC

Super elastic mooring line of polyamide. Protects the mooring clamps of the yacht as it avoids high shock loads. Black.
9518155960 / 10 mm, 6 m - 2190 daN
9518155961 / 12 mm, 6 m - 3900 daN
9518155962 / 12 mm, 10 m - 2190 daN
9518155963 / 14 mm, 8 m - 2190 daN
9518155964 / 14 mm, 10 m - 2190 daN



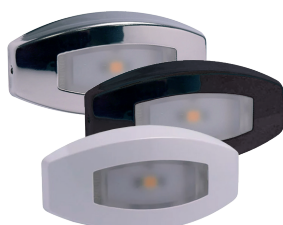
DOUBLE USB SOCKET BERKER

Double USB socket for the Integro Flow series. Ideal for charging mobile devices such as: smartphones, tablets, navigation devices, cameras etc. Panel thickness 10 mm. Anthracite.
9514016146



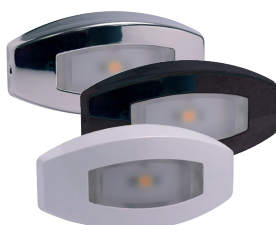
POWER DRIVE KIT LEWMAR 45 EVO

This base is used under the winch to provide a connection between the electric motor and the primary gearing of the winch. For winch model 45ST Evo/Evo Race.
9512420436



COURTESY LIGHT FIJI LUMITEC DIRECT

2-wire courtesy light designed to be used in conjunction with a Poco module (no TTP available). No exposed fasteners. 5000K. 10 - 16 V DC. RGBW Spectrum.
9514030180 / stainless steel
9514030181 / white
9514030182 / black



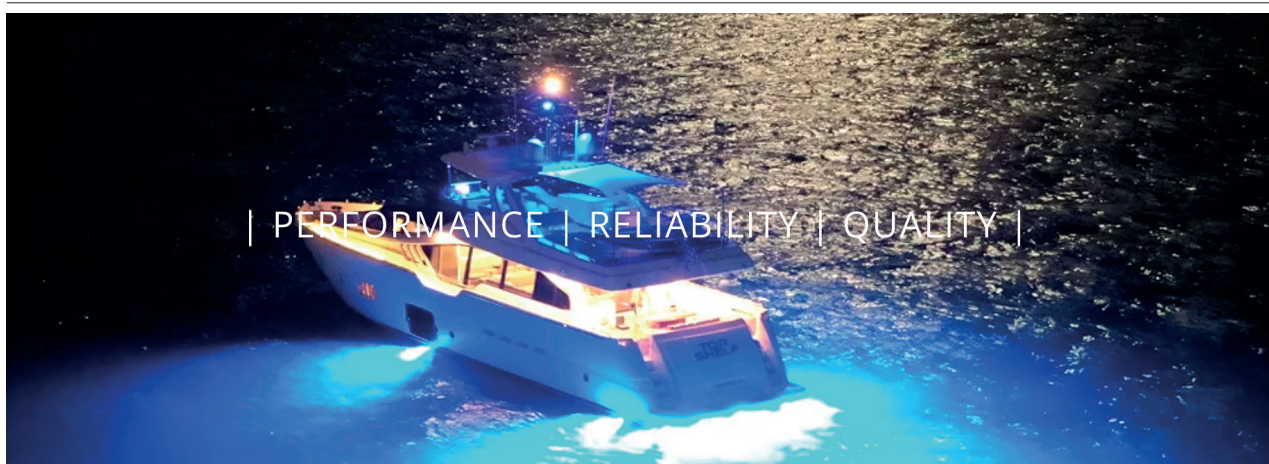
COURTESY LIGHT FIJI LUMITEC INDIRECT

2-wire courtesy light designed to be used in conjunction with a Poco module (no TTP available). No exposed fasteners. 5000K. 10 - 16 V DC. RGBW Spectrum.
9514030183 / stainless steel
9514030184 / white
9514030185 / black



LED FLOOD LIGHT LUMITEC

Versatile, attractive and powerful. More than 1000 lumens. An optical beam pattern designed to spread light very widely and evenly. For dock applications it makes the perfect docking light on boat lifts and boat house, or vehicles and trailers.
9514030854





SIDE LADDER BÅTSYSTEM

Side mounted ladder which enables easy boarding from the side of the boat. The ladder is mounted easily on deck and can be folded for neat storage.
9519037472 / 65 cm - 2 steps
9519037471 / 95 cm - 3 steps



BATTERY SELECTOR SWITCH 1-2-OFF-ALL PERKO

Side mounted ladder which enables easy boarding from the side of the boat. The ladder is mounted easily on deck and can be folded for neat storage. Three ergonomic footsteps. 95 cm.
9514003400



PRESSURE SENSOR

2 bar.
9514700510



PLUG-IN TYPE BASE PERKO

Stainless steel, polymer base. Rake 5°. Fits 3/4" poles with threaded collar. Waterproof snap-on cover and pigtail leads.
9514035038



VERTICAL FOLDING MOUNT 36 CM PERKO

LED optics adjust based on pole mount angles. Vertical mount. Pole: 3/4" aluminum tube. Voltage 12 V DC. 1,28 W. 0,10A.
9514035040



WHITE ALL-AROUND LED LIGHT 135 CM PERKO

LED optics adjust based on pole mount angles. Fits all Perko 0° and 5° plug-in mounting bases. 12 V DC. 1,28 W. 0,10A. Pole: 3/4" aluminum tube. Fits bases: 1045, 1046, 1047, 1048, 1049 & 1060. 9514035026



LED BI-COLOR LIGHT PERKO

High tech, self contained LED module, new stylish design. 12 V LED. 0,21A. 2,5 W. Length 3-7/8". 76,2. Width 3". Height: 1-3/16".
9514033902



LED SIDE LIGHT, RED/GREEN PERKO

LED side light with stainless steel and black polymer base. Designed to be mounted only on a vertical surface and for use on power driven vessels under 20 m in length. 12 V LED. 2 mile visibility.
9514033910



MULTI-FLASH SIGNAL LAMP, BLUE 360° HELLA MARINE

Multi-purpose signal lamps with robust housings, 10 programmable flash modes. Advanced Multivolt circuitry 9 - 33 V DC. Pre-wired with 2,5 m of multi core cable. Power consumption <5 W (<0.42A@12V / <0.021A@24V (continuously on)).
9514033524



SET OF CABLE CLAMPS SKYLLERMARKS ABIKO

1,5 - 6 mm² 108 pcs. Insulated cable lugs in the popular Skyllermarks 108-pack with an assortment of the most usable insulated couplings. All insulated couplings are tinned to ensure a superior lifespan.
9514040174



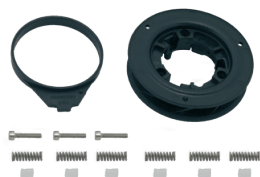
CURTAIN 910 X 370 MM TREM SUNSET

Frame made in stainless steel, painted with epoxy powder. Springs in stainless steel. Polyester fabric with outer silver metallized side Easy mounting under the manholes or in front of the portholes.
9512066236



MEDIUM GLOSS BASE AWLCRAFT CS

Two component, intermixable matt clearcoat designed for the yacht market, specially created to be applied on small and larger areas. Provides a smooth, hard & durable finish, with good scratch resistance.
9519107450



WINCH JAW KIT LEWMAR 45 EVO

This spares kit contains: 1 pcs 445-207,
1 pcs 45500308, 3 pcs B0677,
1 pcs B1879, 1 pcs 45500307,
1 pcs 45500306, 6 pcs 45000113,
6 pcs 45000112, 1 pcs B18521.
9512409363



TELESCOPIC LADDERS FOUR STEPS

Retractable telescopic ladders with handles.
Manufactured in mirror-polished AISI316
stainless steel with oval steps and white
plastic footboard. Open length 1156 mm,
closed length 394 mm, max. width 375 mm.
9519037052



TELESCOPIC LADDERS THREE STEPS

Retractable telescopic ladders with handles.
Manufactured in mirror-polished AISI316
stainless steel with oval steps and white
plastic footboard. Open length 889 mm,
closed length 370 mm, max width 360 mm.
9519037050



LINK ARM FOR UC128-OBFI

Link arm for front mount cylinder
UC128-OBFI (9513200160).
9513200173



SANDING BLOCK 125 X 60 X 12 MM MIRKA

Flexibel sanding block suited
for Aquastar wet sanding paper.
2-sided. Soft/hard.
9519401373



SENSOR WEMA S3-A1300

Sensor based on Reed-technology,
suitable for both fuel and water tanks.
Material stainless steel. Sensor attaches
with 1 1/4" BSP thread. Length 1300 mm.
240 - 30 Ω.
9514700126A



USB-C DUAL CHARGE SOCKET SCANSTRUT FLIP PRO MAX

Perfect for charging modern laptops and
large tablets, phones and any other USB-C
powered devices onboard. 60 W max. on
24 V system / 36 W max. on 12 V system.
Input voltage: 10 - 30 V DC (12/24 V
system). Input current max. 6A (10A fuse
recommended). 9514601129



POWER SOCKET 12 V SCANSTRUT FLIP PRO

Featuring a IPX4 spring loaded lid,
and an impressive 150 W max. power
on a 12 V system. Supplied with
a front-fit bezel kit.
9514601131



SWITCH SANIMARIN

Sanimarin Comfort switch.
9515022455



POWER SOCKET 12 V SCANSTRUT FLIP PRO DUO

Combining features of our original Flip Pro
USB-A/C charger and 12 V power socket
into a beautiful multi power solution.
When not in use, the spring-loaded caps
remain tightly closed, protecting the ports
from the elements.
9514601135



USB-C POWER SOCKET 12 V SCANSTRUT FLIP PRO DUO

Universal fit for any USB-C connectors.
Fast charge (60 W max) up to two devices
at a time. Supplied with a front-fit bezel kit.
120 - 150 W max power 12 V system.
9514601133



4° WEDGE FOR DIRECT RADAR MOUNT SCANSTRUT

Enhance the performance of your radome
with our tough, marine-grade, UV stable
wedge that angles the radar down 4° below
horizontal to provide a level horizon for
your radar when the boat is underway.
9514620090



DOORLIGHT WITH LED BÅTSYSTEM

LED generates very little heat and is thus perfect for mounting in small or narrow spaces. Doorlight is a practical lamp with a wardrobe switch that turns on when the door is opened and extinguishes when the door closes. 8 - 30 V. 1,2 W.
9514026104



LED DOWNLIGHT BÅTSYSTEM CORONA

Red/white light. Complete with a frame for a decorative lighting effect. Power consumption 2 W. Temperature 3000K. 150 lm. Can be dimmed. Recess depth 12 mm, hole Ø 48 mm. 8 - 30 V.
9514050404



SIDELIGHT RED HELLA MARINE 2 NM NAVILED

Black housing. Impact resistant acrylic lens. For <12 m boats. Power consumption less than 2 W combined. Long service life. Multivolt 9 - 33 V DC. 2,5 m cable. Minimum visible distance 2 nautical miles. IP67.
9514033301B / black housing
9514033313B / white housing



SIDELIGHT BLACK HOUSING HELLA MARINE NAVILED 2 NM

For <12 m boats. Sturdy black housing. Power consumption less than 2 W. Long service life. Multivolt 9 - 33 V DC. Single core (120 mm) or twin core (2,5 m) sheathed marine cable assemblies available.
9514034301B / red light
9514034311B / green light



LED STEP LAMP HELLA MARINE

White LED. Light is radiated downward at an angle of 30°. Ideal for illuminating steps, stairs, toe kicks, storage areas, companion ways, deck fittings, signs and switches. IP67. Power consumption 0,5 W.
Chrome plated / 9514024346B
AISI316 / 9514024343B



EXPANSION MODULE LUMITEC PICO OHM

Pico expansion modules makes it possible to control other manufacturers' luminaires, lighting accessories, and devices that do not have the PLI technology. Max. Amp/channel 400mA. 10 - 16 V DC.
9514030958



FLOODLIGHT LUMITEC RAZOR

For hardtop, arch, and pilothouse designs. Long-throw and high position are invaluable for spotting markers and obstructions. When positioned downward, Razor floods cockpits, gunwales and surrounding areas. 10,000 lm. 108 W.
10 - 30 V DC. 9514030582





WIPER BLADE 480 MM ROCA

A wiper blade made of black painted zinc-plated steel. Natural rubber profile with stainless steel backer, including two adaptors to fit wiper arms with straight or J-hook connection.
9514041078



WINDSCREEN WIPER MOTOR 24 V ROCA W12

Spray proof. Can be mounted on the inside as well on the outside. Two-speed. Self-parking. 12 Nm. Adjustable sweep angle 45 - 110°. Powers up to 610 mm x 560 mm / 24" x 22" arm/blade combinations.
9514041346 / 42 mm
9514041349 / 68 mm



LINKED WIPER MOTOR 24 V / 95 MM ROCA W38L

A linked wiper system where one motor runs two W12 wiper arms. Possible to have an overlapping sweep. 38 Nm. Two speeds. Adjusted sweep angle 45 - 110°. Powers up to 610 mm / 560 mm arms and blades.
9510928452



FOLDING BRACKET ROCA ROBUST SOFT XL

Soft-closing with built-in damper. Stays locked when folded. Longer release arm for easier reach. Backplate with radius (Ø 25 mm) for assembly to tube or a flat surface.
9516011047



LED SIDE LIGHT PERKO

Horizontal mount. Red and green LED. Low heat and long life. Two mile visibility.
9514033912



NIPPLE 1" 1/4 GUIDI

Quality solid bronze, male - male BSPT nipple.
9515015426



SAIL EDGE CLEAT CLAMCLEAT CL269

For tensioning sail leech and luff lines. Fits on the edge of a sail. Low profile all-nylon cleat can be sewn or riveted. The semi-flexible sides make it easy to fit around the edge of the sail. Adjust from either side of the sail. Strong and impact resistant.
9512074010



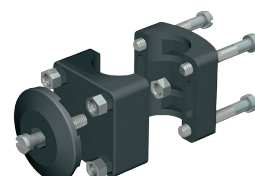
BOW THRUSTER KIT LEWMAR 185TT

With Ø 185 mm bow thruster. 12 V. 3 kW (4 hv). Thrust 58 kgf. Includes joystick control unit, adapter, 2 och 10 m cables, fuse holder and fuse. Tube must be ordered separately.
9512408234



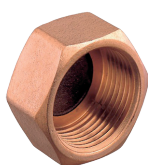
LTC ROUND CASED RADIO + 1852 SPEAKERS 120 W

Radio: 4 x 65 W, USB, AUX, Eq. Bluetooth. Installation diameter 91 mm. Speaker: grill 194 mm. Installation depth 50 mm, hole diameter 140 mm.
9510928470 / black
9510928471 / white



FENDER BRACKET FOR Ø 22 MM RAIL NAWA

Rail mountable fender bracket, for Ø 22 mm rail.
9513055023



**CAP F 3/4"
GUIDI**

Plug with internal thread
bronze. 3/4".
9515015484



**WATER STRAINER
DN100 / PN16 GUIDI**

Horizontal intake water strainer with
PN6/PN16 flanges, bronze.
9515011102



**"NON STICK" VALVE
DN100 / PN16 GUIDI**

"Non stick" valve with PN6/PN16
flanges and position indicator.
9515011122



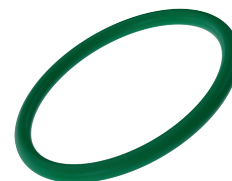
**HINGE 45 X 35 MM
ROCA**

An 45 x 35 mm hatch hinge
in acid-proof stainless steel, suitable
for marine applications.
9516003078



**FOLDING BRACKET
ROCA ROBUST SOFT XL**

Robust Soft folding bracket is strong
console and hinge in one piece as the
standard Robust, where the built-in damper
makes Robust Soft folding bracket work
smoother and significantly reduces the risk
of pinching your fingers.
9516011048



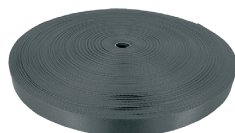
**O-RING FOR DECKFILLERS
ROCA**

An Ø 3,53 mm O-ring in Viton 70 shore
for Roca's deck filler lids.
9511041120



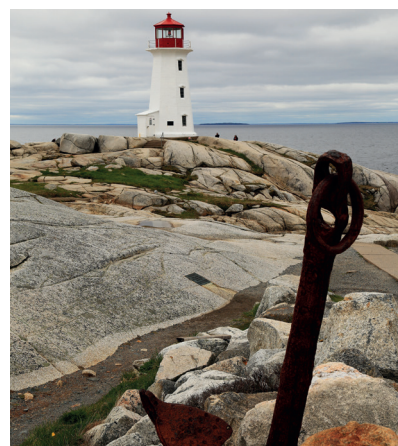
**TABLE EXTENSION
UNIVERSAL KIT OSCULATI**

To be screwed under any folded table
where the handle/support is hidden. When
you need to unfold the table, slide it out
and it will work as support for the tip-top
table. Stainless steel plate and slides, POM
bushings for optimum and smooth sliding.
9516029017



**POLYESTER BELT
3 MM X 100 M TREM**

Black polipropylen belt for boating.
9512066199





BUILT-IN AIR STATION 12 V SCANSTRUT ATMOS

Atmos in-built air station is here to maximize quality time on the water. At the push of a button, Atmos is ready to inflate your paddleboards, towables and more. IPX6. Max. pressure output: 20 psi/1,37 bar. Max. current draw 12A (140 W).
9513053090



ICE MACHINE 230 V WITH WATER TANK ISOTHERM INOX

IceDrink Clear with the spray technology to offer you fresh clear ice. Stainless steel design. Production capacity of 18 kg/day. Three flange options for critical space installations.
9514047203



KIT BOX FOR INTEGRATION ZIPWAKE 600E

Includes all the parts needed to install a dynamic trim control system: 2x interceptors with cable 3 m and cable cover, 1x distribution unit with power cable 6 m, 1x integrator module, 1x standard cable 15 m.
9519041801

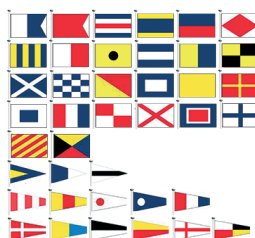


WATER HOSE, ENFORCED WITH STEEL WIRE

Flexible PVC hose with steel wire enforcement, for water and food stuff. Complies with EEC 90/128 directive. Operating temperature -10 °C - +60 °C. Use for engine cooling water intake, bilge pumps, open cockpit, sink bailer hose etc. Price/pc.

2 m
12 mm / 9515011074
16 mm / 9515011080

5 m
12 mm / 9515011075
16 mm / 9515011081
20 mm / 9515011083
28 mm / 9515011085
32 mm / 9515011087



INTERNATIONAL CODE FLAGS SET 2550+2560

Set of 40 flags of the international code. Made of polyester with double perimeter hem, reinforced sheath and halyard.

50 x 70 cm / 9519033003
60 x 73 cm / 9519033010
100 x 150 cm / 9519033013
120 x 160 cm / 9519033014
140 x 170 cm / 9519033015



BI-COLOUR LED NAVILIGHT 12 V PERKO

High tech, self contained LED modules, new stylish rounded design. Black.
9514033906

MARITIM





3D AUTOM. INFLATION 150N LIFEJACKET MARINEPOOL

Classic is comfortable, light and well fitting automatic inflation lifejacket. Thanks to the 3D design, the vest is even more comfortable to wear in the water. 40 kg+. UML MK5 + 33g CO₂. Crotch strap and quick latch. ISO 12402 approved. Colour navy. 9557202622



KAYAK/SUP LIFEJACKET 50N MARINEPOOL

Specially designed for active water sports enthusiasts. Thanks to its design the well-fitting vest offers free movement for the hands. 9557202050 / black
9557202052 / blue



SPARE CARTRIDGE KIT HALKEY ROBERTS ALPHA&EURO

The kit includes the UML Pro Sensor fuse and CO₂ bottle. 9557202650



SPARE CARTRIDGE KIT UML PRO SENSOR ELITE

The kit includes the UML Pro Sensor Elite fuse and CO₂ bottle. 9557202646 / 33g
9557202648 / 38g



COMPASS 12 V RICHIE GLOBEMASTER FB-500

Flush mount. 127 mm open face dial. Easily installed, fits 15,88 cm mounting hole. Full Internal gimbaling. 90 degree lubber lines for easy reading. Choice of green or red lighting. 9514021220



USB CHARGE SCANSTRUT FLIP PRO

Flip Pro is designed for use with either a 12 V or 24 V input and features 1x USB-A and 1x USB-C charging port. Fast charge. USB-C output: 60 W max on 24 V system / 36 W max on 12 V system. USB-A output: 36 W max. 9514601126B



HOT WATER BOILER ISOTEMP SPAMIX 60 L

Outer shell is made of strong polypropylene with thick polyurethane isolation layer. Water tank and other parts in contact with water are made of AISI316 stainless steel. Protected with a 6 bar overpressure valve. 9515020025



BILGE PUMPS 12 V JOHNSON PUMP AQUA VOID

With its industry-first quick-change motor connection enjoy quick and hassle-free cartridge motor changes or capacity upgrades. Requires no cutting and splicing of wires. Water-cooled motor. Includes both a straight and a 90° smooth elbow Dura-Port as well as a removable check valve.

With integrated automatic Ultima Switch:



DRAINABLE BALL VALVE 2" 1/2 MAESTRINI

Ball valve has a bronze construction with the body, coupling, stem and gland all being bronze, with a acetal polymer ball. Suitable for hot water, steam, gasoline, fuel, oil, gas oil, kerosene and compressed air. 9515010347

Capacity straight:
GPH 600 – 38 l./min. 2,7A.
9515004521 / 500 GPH

Capacity straight:
GPH 795 – 50 l./min. 3,7A.
9515004523 / 800 GPH

Capacity straight:
GPH 600 – 38 l./min. 2,7A.
9515004600 / 500 GPH

Capacity straight:
GPH 795 – 50 l./min. 3,7A.
9515004602 / 800 GPH



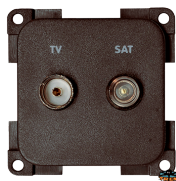
**LED CLOSET LAMP
BÅTSYSTEM**

Wardrobe switch.
For small or narrow spaces.
The power consumption only 1,2 W.
9514026106



**SPARE TRIM FOR LED LIGHT
HELLA MARINE**

Black plastic spare trim.
Black.
9514024365



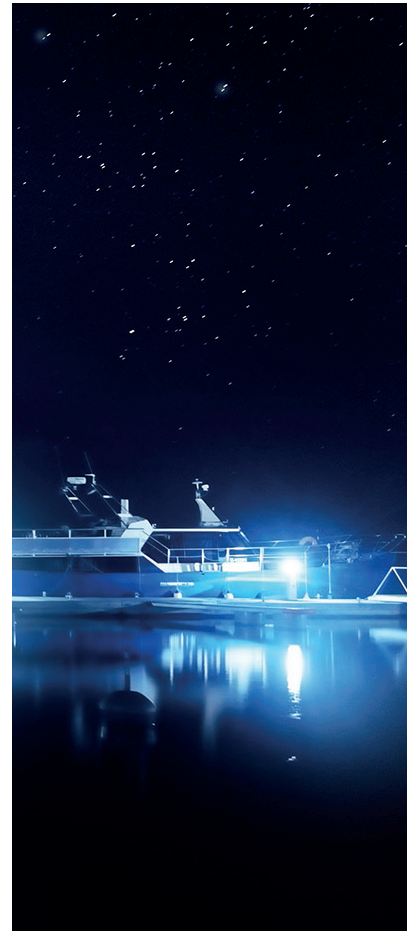
**TV + SAT. SOCKET
TREM**

TV + SAT socket
(TV 9,5 75 Ohm SAT F 75 Ohm).
9514016290



**SOCKET FRAME
TREM**

Trem socket frame, dark brown.
9514016291



**MIXING CUP LID
MIRKA**

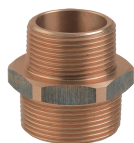
Lid for paint mixing cup.

9519400083 / 400 ml
9519400085 / 650 ml
9519400087 / 1300 ml



**HANDRAIL
ROCA**

Ø 20 mm. The handrai is made for
tough marine conditions.
The handle is crafted in durable stainless
steel with a great looking polished finish.
Length 130 mm.
9511012014



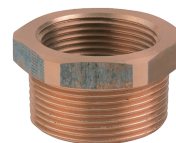
REDUCING NIPPLE GUIDI

Guidi reducing nipple, male-male,
bronze, 2"1/2x2".
9515015456



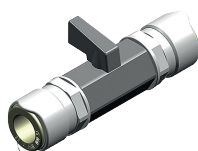
NIPPLE GUIDI

Quality solid bronze BSPT nipple,
male-male, 3".
9515015430



STRAIGHT REDUCER M/F GUIDI

Bushing male-female,
3" x 2"1/2".
9515015464



QUICK CONNECT 15 X 15 MM SHUT-OFF VALVE WHALE

The simple two-step installation procedure
does not require any special tools
to make a watertight connection.
Just cut the tubing to length and insert
it into the fittings. Fast and easy to install.
9515004949



SPARE CARTRIDGE KIT HALKEY ROBERTS ALPHA&EURO

9515030644 / 32 mm - 1"1/4
9515030648 / 50 mm - 2"
9515030650 / 38 mm - 1"3/4



BALL VALVE MOUNTING BRACKET TRUDESIGN

Designed to mount Ball Valves
independently and securely to bulk heads,
floors or stringers when not connected to
a skin fitting (thru hull). Prevents movement
of ball valve when turning the handle and
secure hose assembly.
9515030379



INLINE CHECK VALVE 25/28 MM WHALE

Whale non metallic construction check
valve. This check valve is suitable for
use with manual and electric pumps,
and connects to 25 mm or 28 mm ID hose.
9515004074



HORIZONTAL MULTI-CABLE SEAL SCANSTRUT DECKSEAL

Multi-horizontal cable seal has been
designed to provide a quick and easy
installation for multiple cables up to
Ø15 mm. Helps you achieve an ultra-clean,
easy-to-fit, and 100% watertight installation
of large electronics, solar and light cables.
9515030219



CABLE SEAL SCANSTRUT DECKSEAL LP MULTI

Multiple cables can be accommodated up
to 15 mm ensuring a compact, low-profile
solution that not only enhances aesthetics
but also guarantees a 100%
watertight installation.
9515030256 / black
9515030258 / stainless steel



CABLE SEAL SCANSTRUT LP, AISI316

Low-profile solution. 100% watertight
installation. For solar panels, light bars,
rooftop electronics, and more.
9515030242 / 2 - 8 mm - mini
9515030246 / 4 - 9 mm - small A
9515030250 / 9 - 14 mm - small B
9515030254 / 9 - 14 mm - medium



CABLE SEAL SCANSTRUT LP, BLACK

Low-profile solution. 100% watertight
installation. For solar panels, light bars,
rooftop electronics, and more.
9515030240 / 2 - 8 mm - mini
9515030244 / 4 - 9 mm - small A
9515030248 / 9 - 14 mm - small B
9515030252 / 9 - 14 mm - medium



VACUUM CLEANER 230 V MIRKA 1125L PC EU

Suitable for professional use. Suitable for
both dry and wet use. Designed for use with
Mirka machines. Does not include a dust
hose. Power 1200 W. Noise level 61 dB.
Container volume 25 l.
9519401461



EASY RELEASE SET ROCA

The easy release is an addition to robust folding brackets that enables you to easily release three robust brackets on a wider installation/shelf, using only one hand.
9516011071



TUBE ROCA ROBUST EASY RELEASE

Aluminium tube for Robust Easy Release set.
1000 mm.
9516011072



ANCHOR HOLDER NAWA BRUCE

Compact and sturdy holder for 5 - 10 kg Bruce-anchors. Two connectors for mounting to horizontal and vertical Ø 25 mm tubes included.
9519029008



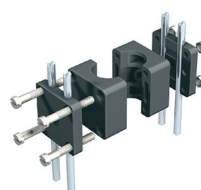
LINE HOLDER (HANSA) NAWA

Nawa holder for Hansa safety lines. Connector for horizontal and vertical Ø 25 mm tube included.
9519029009



FENDER BASKET 170 MM NAWA

Patented connectors that will make it possible to fasten the fender baskets on almost any railing in any combination. With the additional parallel connector one can join the fender baskets to get a really sturdy assembly. 9513055016



DOUBLE CONNECTOR NAWA

For attaching two Nawa products on opposite sides of the guard rail. Ø 32 mm.
9517012034



MOORING HOOK NAWA

Simple and reliable mooring hook, made of Ø 8 mm stainless steel.
915 mm.
9517012011



ROPE REELS NAWA

For anchoring and for mooring to a buoy or pier. Quick to use. Can also be used for stowing hoses or electrical cables. Including three 25 mm connectors.
9513055060 / Ø 320 mm
9513055061 / Ø 400 mm
9513055062 / Ø 500 mm



LINE REEL SPARE PARTS KIT NAWA

Spare brake pad kit including washers and a knob.
9513055063



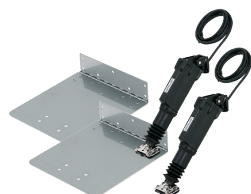
ADAPTER NAWA

Adapter for connector 25 to 22 mm, 4 pcs.
9517012035



CUP HOLDER NAWA

A stable holder for the most common mugs, bottles and cans with a inner dimension of Ø 66 mm. Versatile mounting options for 25 mm rails at different angles with the included Nawa swivelling connector. 9519029007



TRIM CYLINDER SERIE 12" X 9" UFLEX

Trim cylinder set includes:
2 pcs AC12 trim cylinders 273 mm 43001V (short model), 12 V DC and trim plates 2 pcs P12" x L9".
9519040950



ANEMOMETER SKYWATCH WIND

Skywatch Wind measures wind speed, air temperature and wind cooling quickly and accurately.
9514011037



LIFERAFT VALISE FOR 8 PER. CREWSAVER ISO OCEAN

High volume of water pockets. A semi-rigid boarding ramp. Interior and exterior lifelines. External strobe light. Internal LED light. Rainwater catcher. Emergency ration packs. Easy to transport. Approved to ISO 9650-1 standards.
9532006809

For safe boating.



On our webshop www.maritim.fi you can check the price of the product, availability and make purchases in an easy way. You'll also find technical information for the entire product range.

We reserve the right to make price, size or product changes without notice.

Oy Maritim Ab
Veneentekijäntie 1
00210 Helsinki, Finland
Tel. +358 (0)10 2740 300
www.maritim.fi

MARITIM

Wholesale:
orders@maritim.fi
Tel. +358 (0)10 2740 320